



# FABRICS 2025

## FABRICS - GREEN FABRICS



### Air Recycled

Composition:  
100% Polyester  
Weight: 130 g/m<sup>2</sup>



### Aria 3D Recycled

Composition:  
95% Polyester  
5% Elasthane  
Weight: 120 g/m<sup>2</sup>



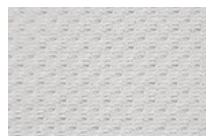
### Gabardine PL Recycled

Composition:  
75% Polyester  
25% Elasthane  
Weight: 230 g/m<sup>2</sup>



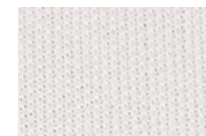
### Eco Land Recycled

Composition: 80% Polyester  
20% Elasthane Weight: 240 g/m<sup>2</sup>



### Green Sea Recycled

Composition:  
78% Polyester  
22% Elasthane  
Weight: 135 g/m<sup>2</sup>



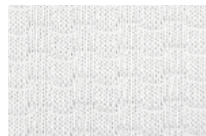
### Interlock Recycled

Composition:  
100% Polyester  
Weight: 120 g/m<sup>2</sup>



### Interpower Recycled

Composition:  
86% Micropolyester  
14% Elasthane  
Weight: 140 g/m<sup>2</sup>



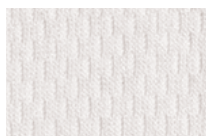
### Race Recycled

Composition:  
100% Polyester  
Weight: 120 g/m<sup>2</sup>



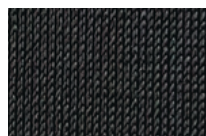
### Rudolf Recycled

Composition:  
95% Polyester  
5% Elasthane  
Weight: 120 g/m<sup>2</sup>



### Timor Recycled

Composition:  
100% Polyester  
Weight: 135 g/m<sup>2</sup>



### Green Fit W Recycled

Composition:  
78% Polyamide  
22% Elasthane  
Weight: 200 g/m<sup>2</sup>

FABRICS

LIGHT-WEIGHT



**Ambryn**  
Composition:  
100% Polyester  
Weight: 120 g/m<sup>2</sup>



**Crono Sanitized**  
Composition:  
100% Polyester  
Weight: 135 g/m<sup>2</sup>



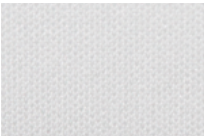
**Prey 40-0026**  
Composition:  
74% Polyester  
26% Elasthane  
Weight: 100 g/m<sup>2</sup>



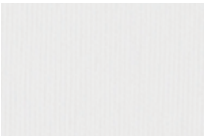
**Interpower**  
Composition:  
86% Micropolyester  
14% Elasthane  
Weight: 140 g/m<sup>2</sup>



**6059**  
Composition:  
100% Polyester  
Weight: 135 g/m<sup>2</sup>



**Chelsea**  
Composition:  
100% Polyester  
Weight: 120 g/m<sup>2</sup>



**Eagle Print**  
Composition:  
100% Polyester  
Weight: 100 g/m<sup>2</sup>



**Interlock**  
Composition:  
100% Polyester  
Weight: 120 g/m<sup>2</sup>



**Mesh Diagonale 14620**  
Composition: 82% Polyester 18%  
Elasthane Weight: 105 g/m<sup>2</sup>



**Air**  
Composition:  
100% Polyester  
Weight: 130 g/m<sup>2</sup>



**Clima 52-0016**  
Composition:  
75% Polyester  
25% Elasthane  
Weight: 129 g/m<sup>2</sup>



**EEC 1505003**  
Composition:  
100% Polyester  
Weight: 125 g/m<sup>2</sup>



**Interlock 80**  
Composition:  
100% Polyester  
Weight: 80 g/m<sup>2</sup>



**Orange**  
Composition:  
90% Polyester  
10% Elasthane  
Weight: 110 g/m<sup>2</sup>

FABRICS



**Prey 40-0026**  
Composition:  
74% Polyester  
26% Elasthane  
Weight: 100 g/m<sup>2</sup>



**Rabbit Light**  
Composition:  
100% Polyester  
Weight: 130 g/m<sup>2</sup>



**Record E.A.**  
Composition:  
100% Polyester  
Weight: 135 g/m<sup>2</sup>



**Rudolf**  
Composition:  
95% Polyester  
5% Elasthane  
Weight: 120 g/m<sup>2</sup>



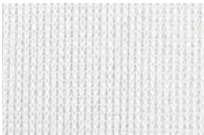
**Scotland Merino**  
Composition:  
51% Polyester  
41% Wool Merino  
8% Elasthane  
Weight: 130 g/m<sup>2</sup>



**Sushi**  
Composition:  
100% Polyester Micro-fibre  
Weight: 85 g/m<sup>2</sup>



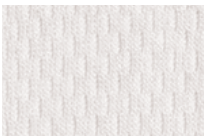
**S10**  
Composition:  
95% Polyester  
5% Spandex  
Weight: 125 g/m<sup>2</sup>



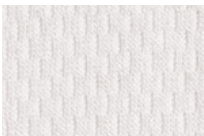
**Terry Superlight Print  
WX Pro WR**  
Composition:  
100% Polyester  
Weight: 90 g/m<sup>2</sup>



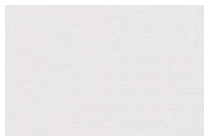
**Time Out**  
Composition:  
100% Polyester  
Weight: 110 g/m<sup>2</sup>



**Timor**  
Composition:  
100% Polyester  
Weight: 135 g/m<sup>2</sup>



**Timor Luxury**  
Composition:  
100% Polyester  
Weight: 135 g/m<sup>2</sup>



**Twenty**  
Composition:  
100% Polyester  
Weight: 37 g/m<sup>2</sup>



**2BF14**  
Composition:  
86% Polyester  
14% Elasthane  
Weight: 180 g/m<sup>2</sup>



**58261**  
Composition:  
96% Polyester  
4% Elasthane  
Weight: 90 g/m<sup>2</sup>

MESH



FABRICS



**Antigua**  
Composition:  
78% Polyamide  
22% Elasthane  
Weight: 135 g/m<sup>2</sup>



**Ariane**  
Composition:  
78% Polyester  
22% Elasthane  
Weight: 130 g/m<sup>2</sup>



**J311404A**  
Composition:  
70% Recycled Polyester  
19% Polyester  
11% Elasthane  
Weight: 113 g/m<sup>2</sup>



**JL-130**  
Composition:  
95% Polyester  
5% Spandex  
Weight: 83 g/m<sup>2</sup>



**JL-135**  
Composition:  
100% Polyester  
Weight: 40 g/m<sup>2</sup>



**JL-215**  
Composition:  
91% Polyester  
9% Lycra  
Weight: 145 g/m<sup>2</sup>



**JL-221B**  
Composition:  
100% Polyester  
Weight: 99 g/m<sup>2</sup>



**Kingdom Mesh**  
Composition: 87% Polyester 13% Elasthane  
Weight: 135 g/m<sup>2</sup>



**Kite**  
Composition:  
94% Polyester  
6% Elasthane  
Weight: 80 g/m<sup>2</sup>



**Light**  
Composition:  
100% Polyester  
Weight: 85 g/m<sup>2</sup>



**PCM-1319-6A white**  
Composition: 67% Polyester 37.5TM 21% Polyester 12% Elasthane  
Weight: 135 g/m<sup>2</sup>



**Sole**  
Composition:  
78% Polyamide  
22% Elasthane  
Weight: 165 g/m<sup>2</sup>



**SK5129**  
Composition:  
67% Recycled Polyester  
21% Polyester  
12% Elasthane  
Weight: 120 g/m<sup>2</sup>



**Tahiti**  
Composition:  
77% Polyester  
23% Elasthane  
Weight: 155 g/m<sup>2</sup>

FABRICS

MEDIUM / HEAVY-WEIGHT



Antiwind Cow Boy

Composition: 90% Polyester  
10% Polyurethane Weight:  
300 g/m<sup>2</sup>



BR-2334

Composition: 71% Polyester 29%  
Elastane Weight:  
240 g/m<sup>2</sup>



Chrono Men

Composition: 80% Polyester 20%  
Elastane Weight:  
175 g/m<sup>2</sup>



Elite Poly

Composition:  
65% Polyester  
35% Elastane  
Weight: 210 g/m<sup>2</sup>



45631 Garzato

Composition:  
100% Polyester  
Weight: 180 g/m<sup>2</sup>



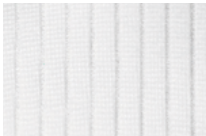
Antiwind Everest

Composition:  
100% Polyester  
Weight: 270 g/m<sup>2</sup>



Brisbane

Composition:  
82% Polyester  
18% Elastane  
Weight: 210 g/m<sup>2</sup>



Coldblack® W64562

Composition:  
78% Polyester  
22% Elastane  
Weight: 225 g/m<sup>2</sup>



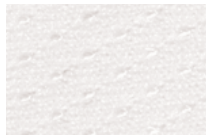
Endurance X Matt

Composition:  
80% Polyester  
20% Elastane  
Weight: 240 g/m<sup>2</sup>



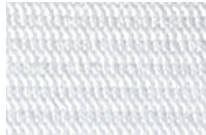
Anibal

Composition:  
81% Polyester  
19% Elastane  
Weight: 155 g/m<sup>2</sup>



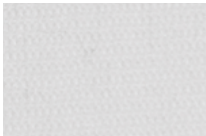
Antiwind Tudor

Composition: 90% Polyester 10%  
Polyurethane Weight:  
190 g/m<sup>2</sup>



Brenner Havier

Composition:  
86% Polyester  
14% Spandex  
Weight: 326 g/m<sup>2</sup>



Dolomiti

Composition:  
85% Polyester  
15% Elastane  
Weight: 250 g/m<sup>2</sup>



Enduro

Composition:  
100% Polyester  
Weight: 290 g/m<sup>2</sup>

FABRICS



Falcon Plus

Composition:  
100% Polyester  
Weight: 160 g/m<sup>2</sup>



Lycra Ceylon

Composition: 80% Polyester 20% Elastane  
Weight: 190 g/m<sup>2</sup>



Nashua

Composition:  
100% Polyester  
Weight: 180 g/m<sup>2</sup>



Pro 27308

Composition:  
100% Polyester  
Weight: 200 g/m<sup>2</sup>



Shell

Composition:  
80% Polyester  
20% Elastane  
Weight: 210 g/m<sup>2</sup>



Infinity

Composition:  
75% Polyester  
25% Elastane  
Weight: 160 g/m<sup>2</sup>



Lycra New Monica  
Acqua Zero

Composition: 86% Polyester  
14% Elastane  
Weight: 190 g/m<sup>2</sup>



Olympic

Composition:  
83% Polyester  
17% Elastane  
Weight: 195 g/m<sup>2</sup>



Reozon E63893

Composition: 82% Polyester 18% Elastane  
Weight: 200 g/m<sup>2</sup>



Shield

Composition: 80% Polyester 20% Elastane  
Weight: 240 g/m<sup>2</sup>



Jumper 85

Composition:  
100% Polyester  
Weight: 195 g/m<sup>2</sup>



Marmolada Print

Composition:  
87,6% Polyester  
12,4% Elastane  
Weight: 310 g/m<sup>2</sup>



Pixel 300CH

Composition:  
84% Polyester  
13% Glass  
3% Polyurethane  
Weight: 310 g/m<sup>2</sup>



S9802033A

Composition:  
54% Recycled Polyester  
35% Polyester  
11% Elastane  
Weight: 165 g/m<sup>2</sup>



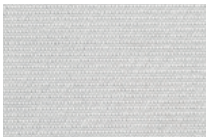
Shield Endurance

Composition:  
80% Polyester  
20% Elastane  
Weight: 240 g/m<sup>2</sup>



**Sirio**

Composition:  
82% Polyester  
18% Elasthane  
Weight: 230 g/m<sup>2</sup>



**SK5128**

Composition:  
89% Polyester  
11% Elasthane  
Weight: 150 g/m<sup>2</sup>



**Sky**

Composition:  
75% Polyester  
25% Polyurethane  
Weight: 150 g/m<sup>2</sup>



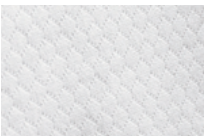
**Stelvio**

Composition:  
85% Polyester  
15% Elasthane  
Weight: 250 g/m<sup>2</sup>



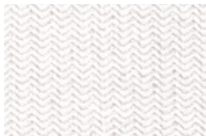
**Strong**

Composition:  
100% Polyester  
Weight: 250 g/m<sup>2</sup>



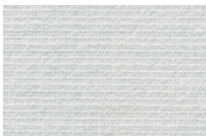
**Superphase**

Composition:  
100% Polyester  
Weight: 250 g/m<sup>2</sup>



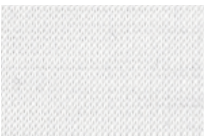
**Tavolara**

Composition:  
80% Polyester  
20% Elasthane  
Weight: 210 g/m<sup>2</sup>



**TF KSF 0113**

Composition:  
92% Polyester  
8% Elasthane  
Weight: 310 g/m<sup>2</sup>



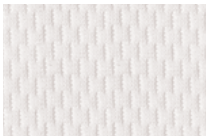
**Vintage 170**

Composition:  
77% Polyester  
7% Elasthane  
16% Wool  
Weight: 170 g/m<sup>2</sup>



**Vyper 40**

Composition: 87% Polyester 13% Elasthane  
Weight: 240 g/m<sup>2</sup>



**Warm**

Composition:  
100% Polyester  
Weight: 200 g/m<sup>2</sup>



**Warm Sport**

Composition: 82% Polyester 18% Elasthane  
Weight: 230 g/m<sup>2</sup>



**Wayne 3x1**

Composition:  
75% Polyester  
25% Elasthane  
Weight: 240 g/m<sup>2</sup>



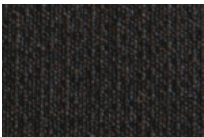
**X-Sound**

Composition:  
87% Polyester  
13% Elasthane  
Weight: 180 g/m<sup>2</sup>



FABRICS

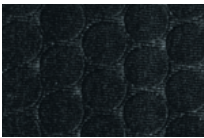
DYED FABRICS



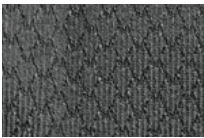
**DT 878**  
Composition:  
93% Polyester  
7% Spandex  
Weight: 235 g/m<sup>2</sup>



**In-Forma Black**  
Composition:  
79% Polyamide  
21% Elasthane  
Weight: 185 g/m<sup>2</sup>



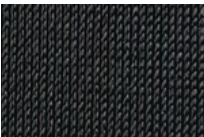
**Lycra Thunder Bike  
Power Goffrato 0001**  
Composition:  
80% Polyester  
20% Elasthane  
Weight: 200 g/m<sup>2</sup>



**Rush**  
Composition:  
75% Polyester  
25% Elasthane  
Weight: 220 g/m<sup>2</sup>



**2BF14 Black**  
Composition: 86%  
Polyester 14%  
Elasthane Weight:  
180 g/m<sup>2</sup>



**Force Power**  
Composition:  
64% Polyamide  
36% Elasthane  
Weight: 225 g/m<sup>2</sup>



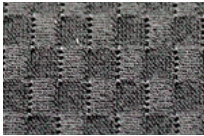
**K2**  
Composition: 85%  
Polyester 15%  
Elasthane Weight:  
280 g/m<sup>2</sup>



**PCM-1319-6A black**  
Composition:  
67% Polyester 37.5TM  
21% Polyester  
12% Elasthane  
Weight: 135 g/m<sup>2</sup>



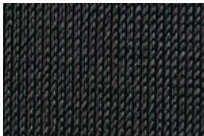
**S3311**  
Composition:  
95% Polyester  
5% Spandex  
Weight: 125 g/m<sup>2</sup>



**Checkmate**  
Composition:  
83% Nylon  
17% Elasthane  
Weight: 245 g/m<sup>2</sup>

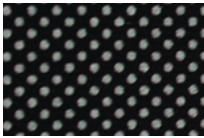


**Gabardine Black**  
Composition: 75%  
Polyamide 25% Elasthane  
Weight: 200 g/m<sup>2</sup>

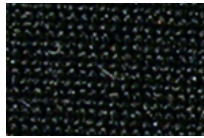


**Performer \***  
Composition:  
80% Polyamide  
20% Lycra  
Weight: 210 g/m<sup>2</sup>

\* also available in other colours than black

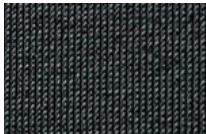


**Pixel Heavy Black**  
Composition:  
86% Polyester  
7% Glass  
7% Polyurethane  
Weight: 330 g/m<sup>2</sup>



**Superroubaix**  
Composition:  
84% Polyester  
16% Lycra Power  
Weight: 245 g/m<sup>2</sup>

FABRICS



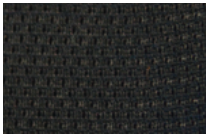
Topazio W

Composition:  
78% Polyamide  
22% Elasthane  
Weight: 200 g/m<sup>2</sup>



Vega

Composition:  
80% Polyamide  
20% Elasthane  
Weight: 210 g/m<sup>2</sup>



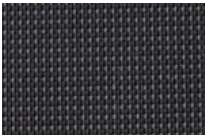
Velo Mesh

Composition:  
82% Polyamide  
18% Elasthane  
Weight: 130 g/m<sup>2</sup>



Vuelta

Composition:  
85% Polyamide  
15% Elasthane  
Weight: 250 g/m<sup>2</sup>



Wave

Composition:  
71% Polyamide  
19% Polyester  
10% Acrylic  
Weight: 260 g/m<sup>2</sup>

